

KROJ MAJICA KRATEK & DOLG ROKAV

NAVODILA ZA TISKANJE IN REZANJE KROJA:

Pri tiskanju kroja nastavite merilo na 100 %. Najprej natisnite prvo stran in preverite velikost testnega kvadrata, ki mora meriti 5 × 5 cm.

Ko je vse pravilno natisnjeno, razporedite liste po označenem zaporedju – od 1A do 6A, od 1B do 6B in tako naprej.

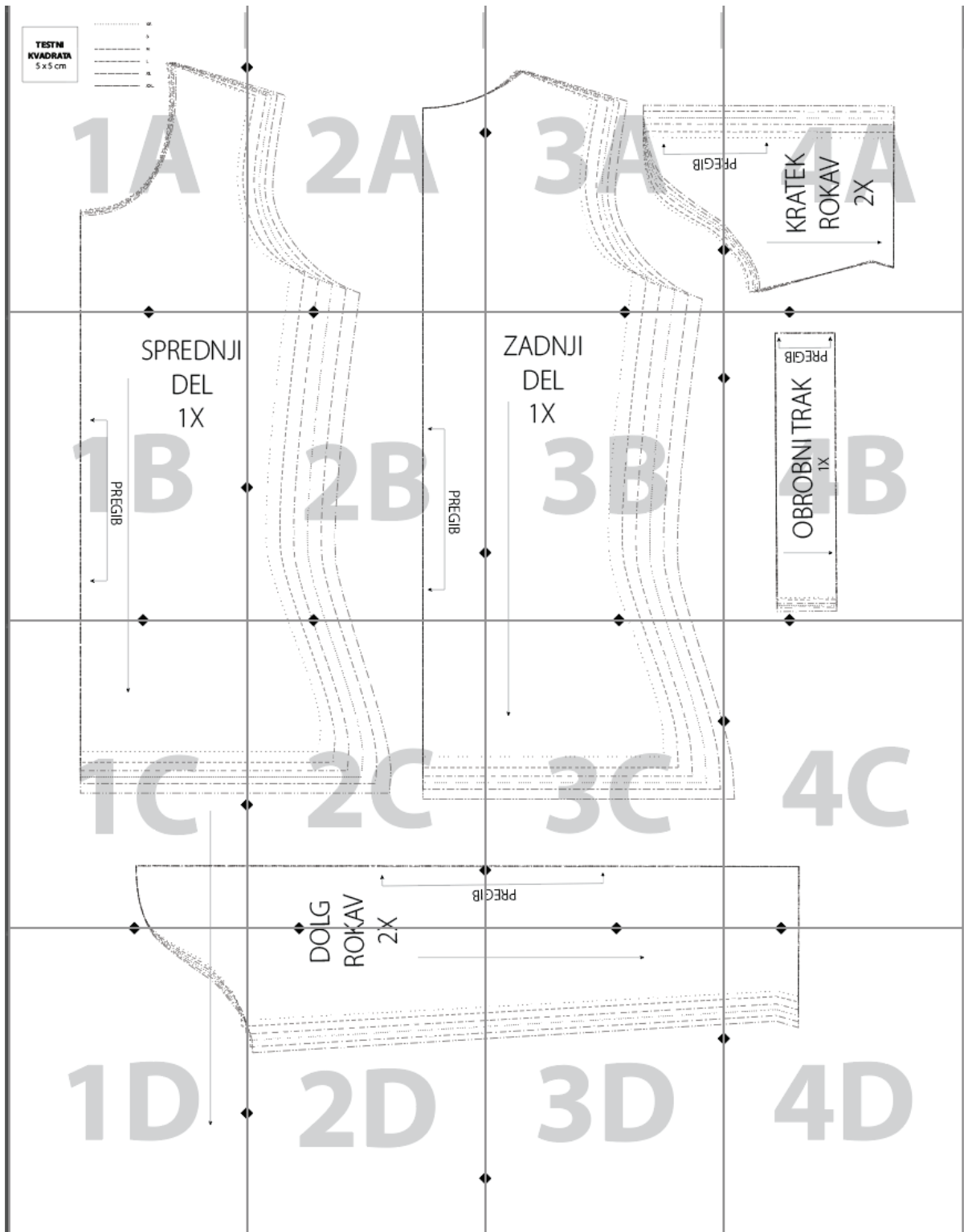
Liste nato zlepimo skupaj in režemo po črtkani liniji.

Dodatek za šiv 1 cm je že vključen v kroju, zato ga ni treba dodajati posebej.

Pri rezanju blaga bodite pozorni na število potrebnih kosov in označbe delov, ki jih je treba rezati na pregibu blaga.

To zagotovi, da bodo vsi deli pravilno poravnani in končni izdelek lepo izdelan.

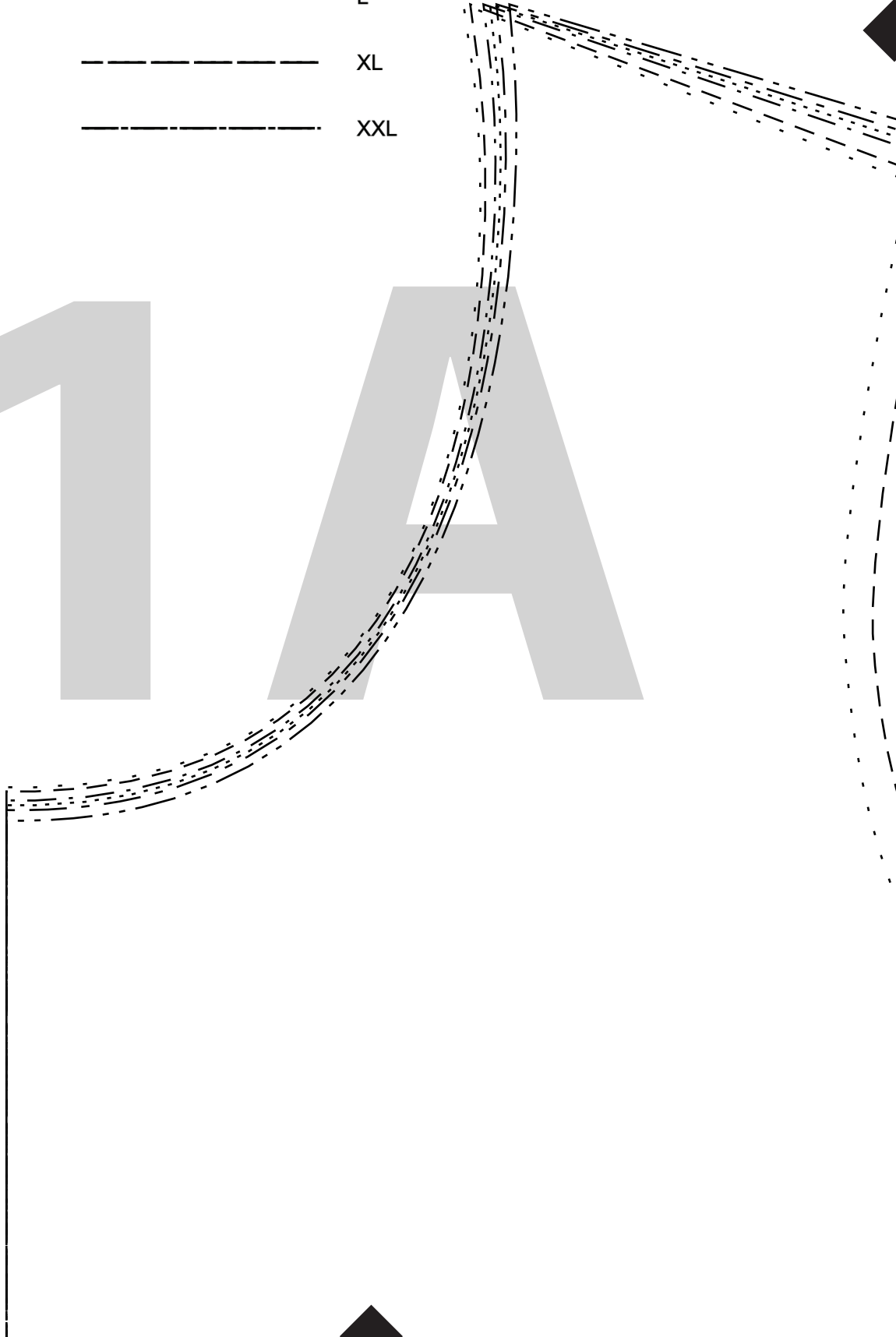
PRIKAZ SESTAVE KROJA:



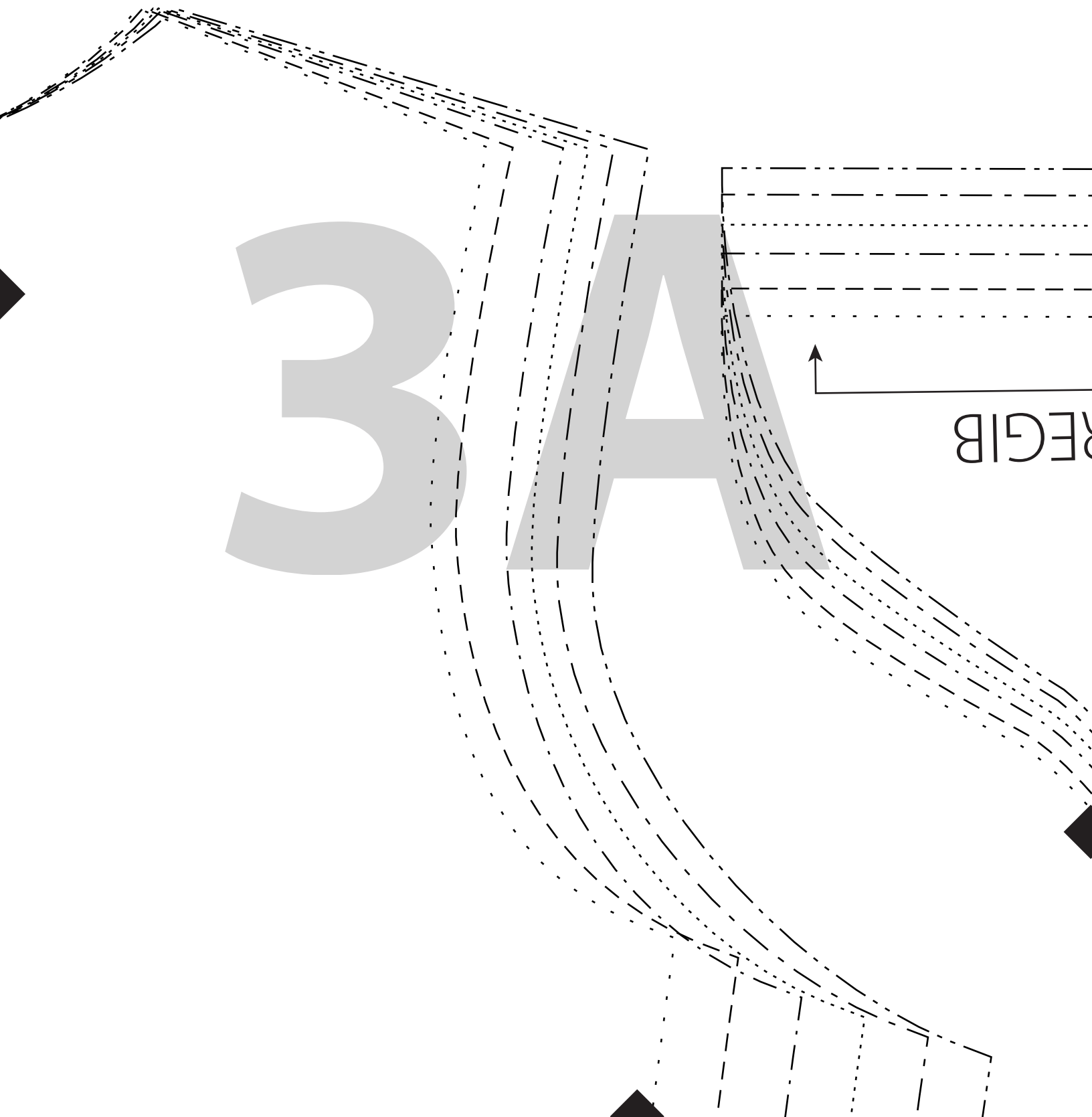
**TESTNI
KVADRATA**
5 x 5 cm

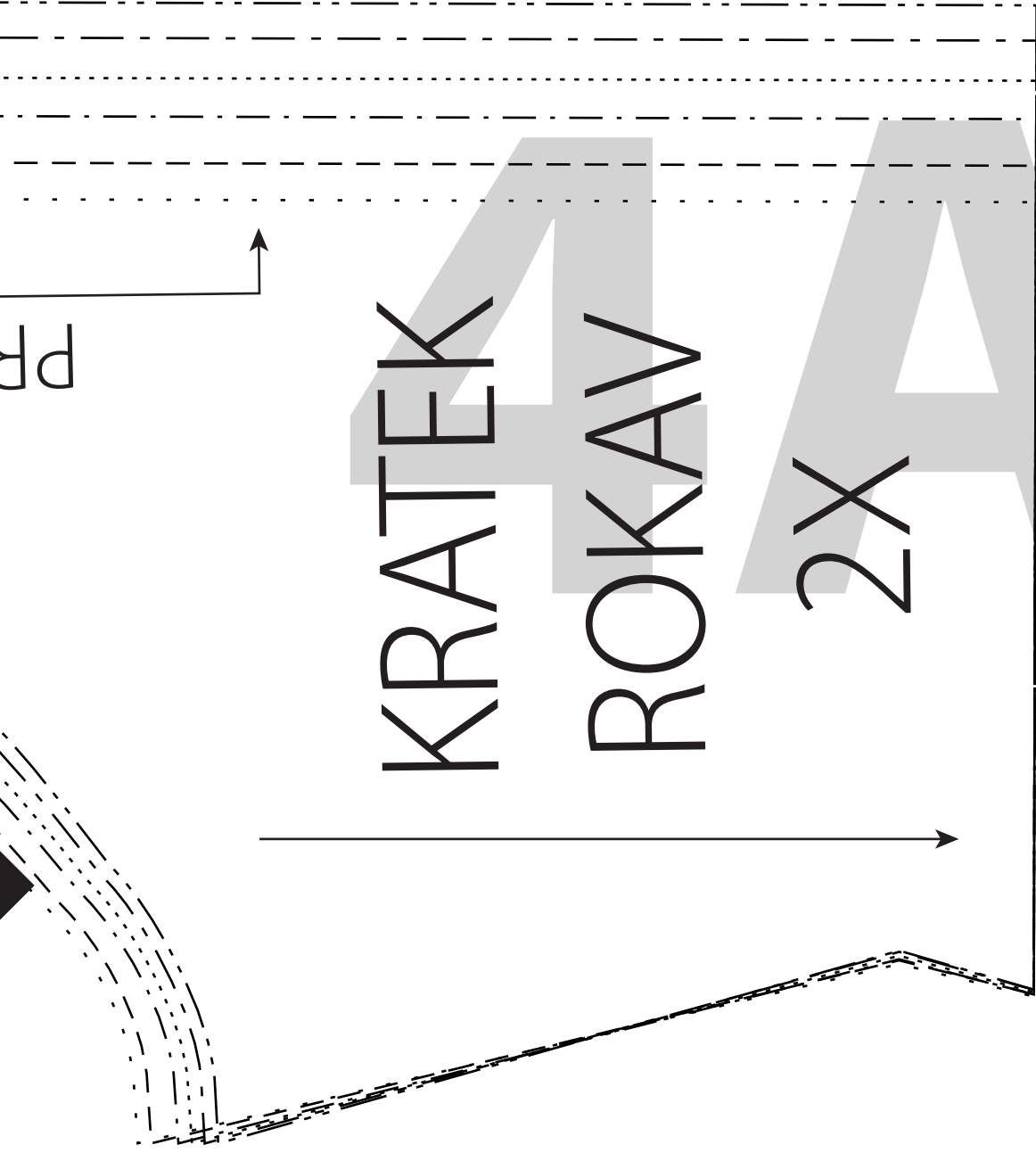
- XS
- S
- - - - M
- L
- - - - XL
- . - . XXL

1 A



2A





KRATEK

ROKAV

2X

SPREDNJI

DEL

1X

B

1

PREGIB

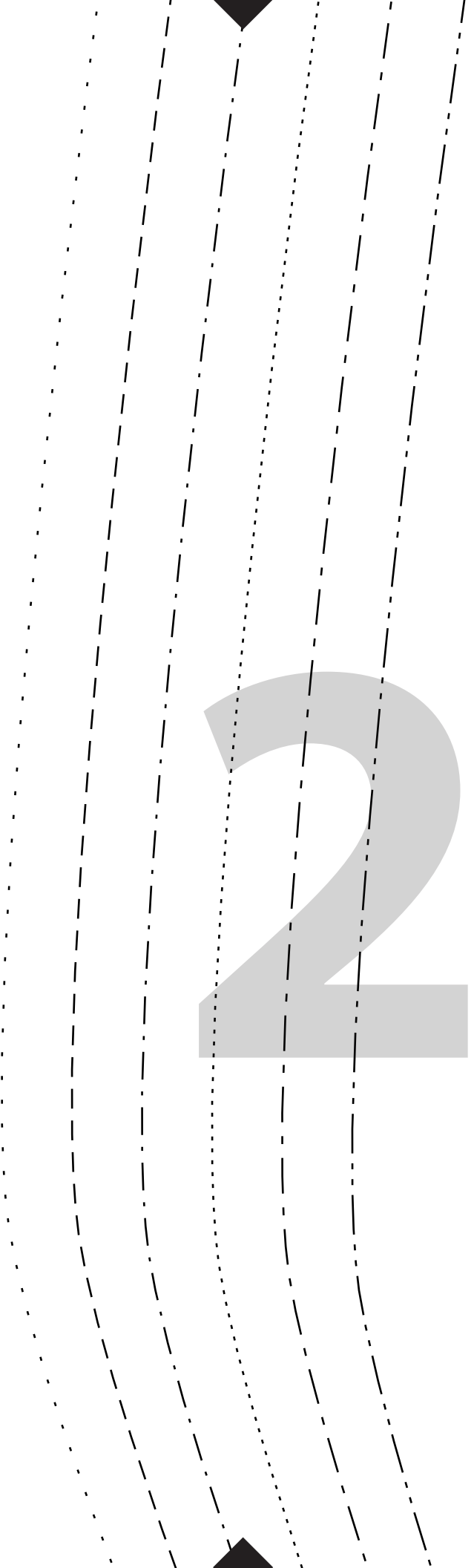


PREGIB



B

2

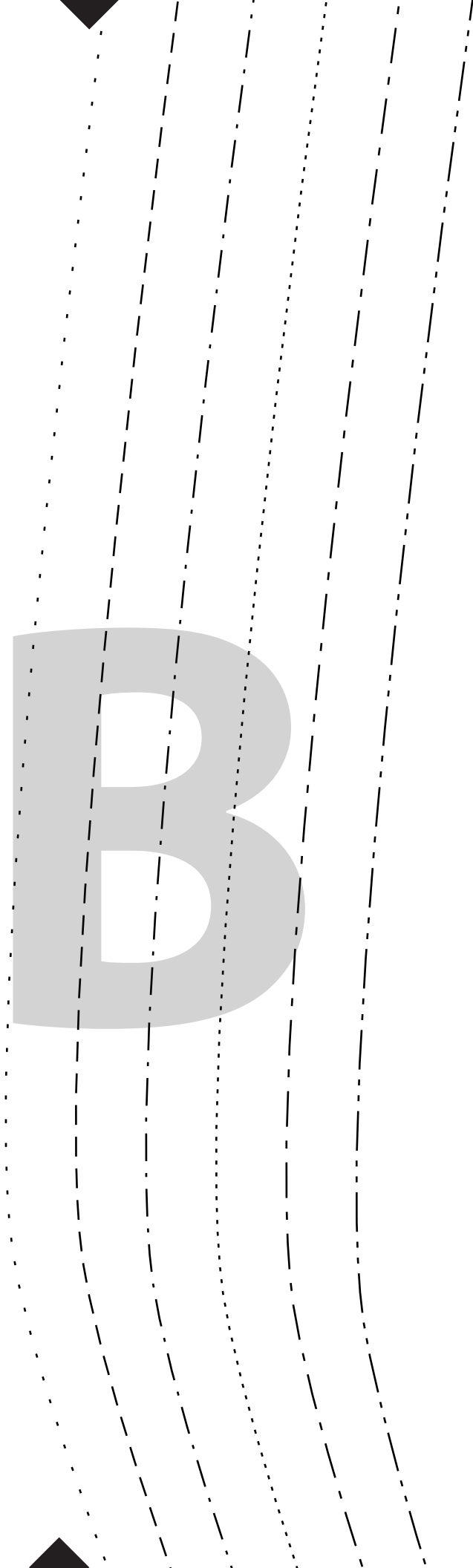


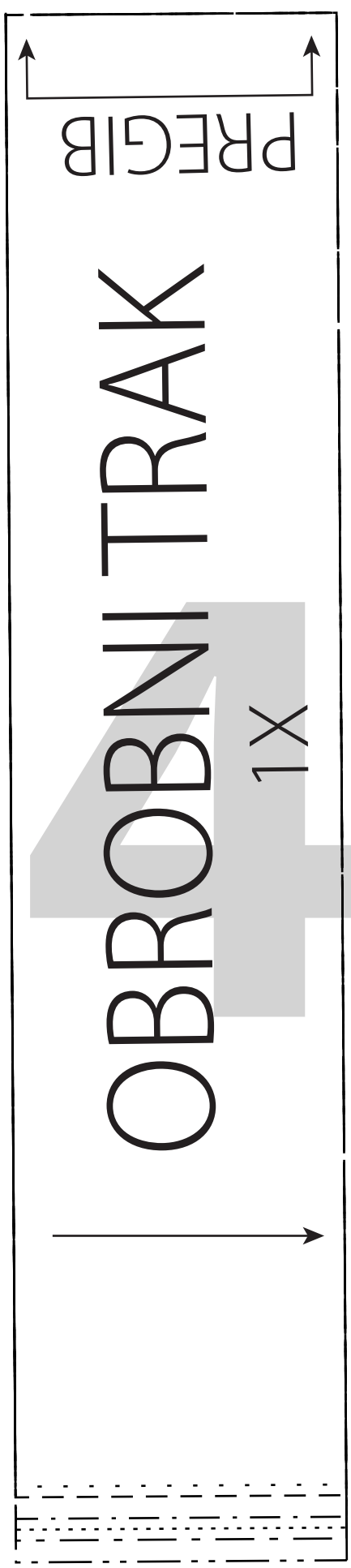
ZADNJI

DEL

1X

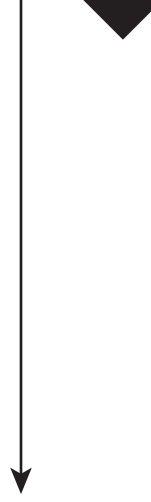
3B

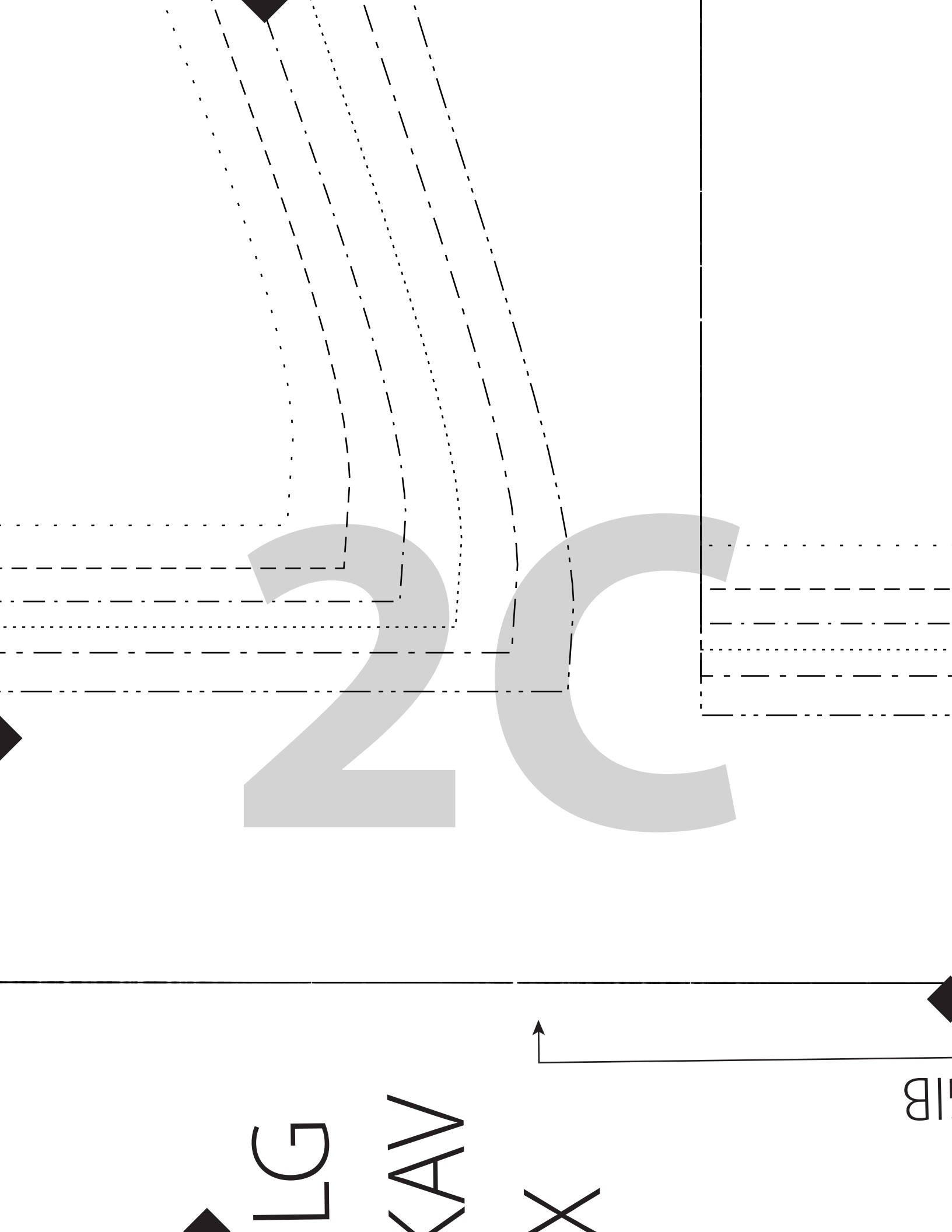
The page features a set of handwriting practice lines on the right side. These lines are slanted downwards from left to right and consist of four parallel lines: a solid top line, a dashed middle line, a dotted bottom line, and a solid baseline. The letters '3B' are printed in a large, light gray font, with the '3' positioned to the left of the 'B'. The 'B' is partially overlaid by the dashed middle line and the dotted bottom line.



B

TC





HIB

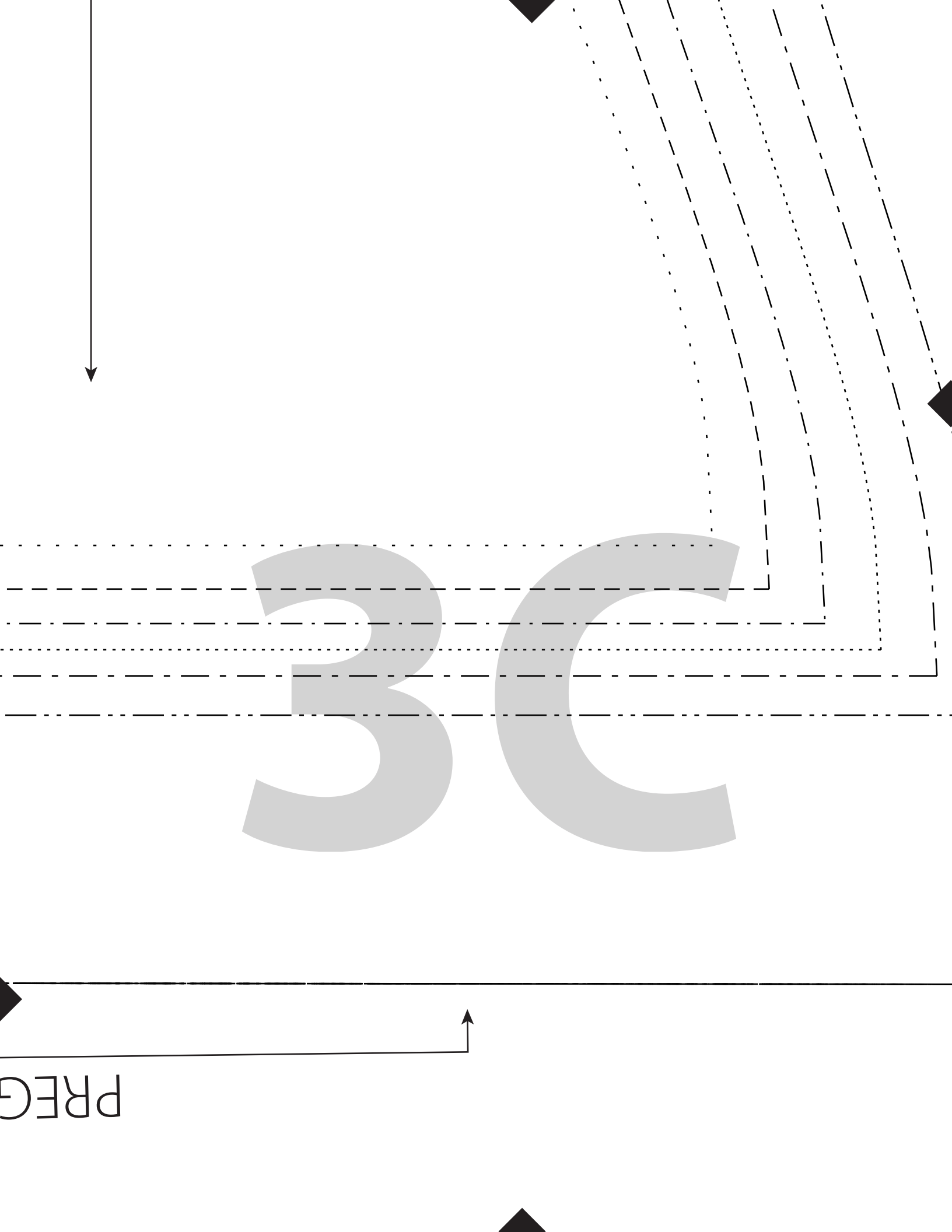
X

CAV

LG

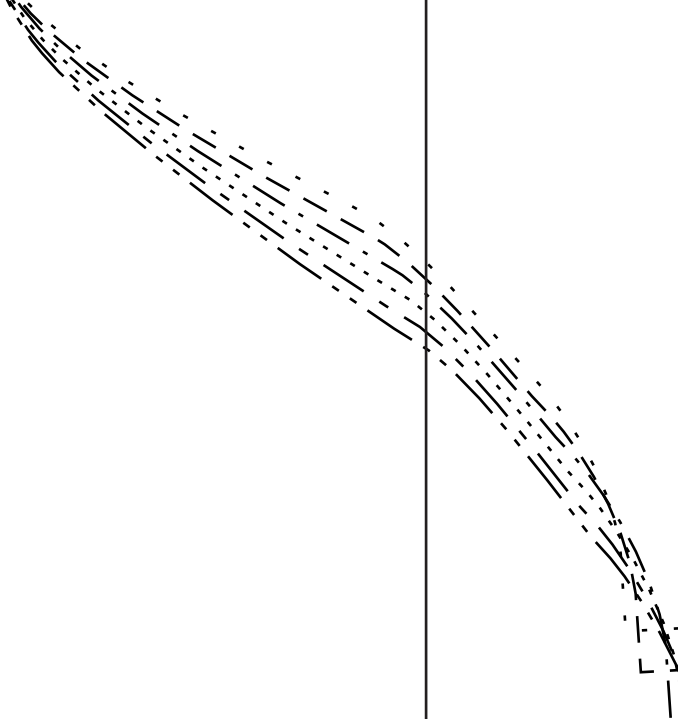
PREG

3C



4C

1D

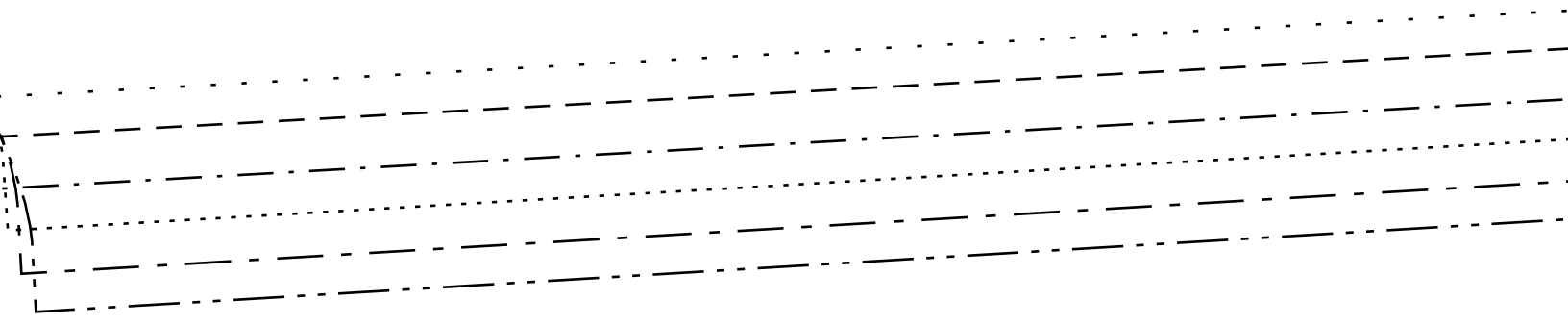


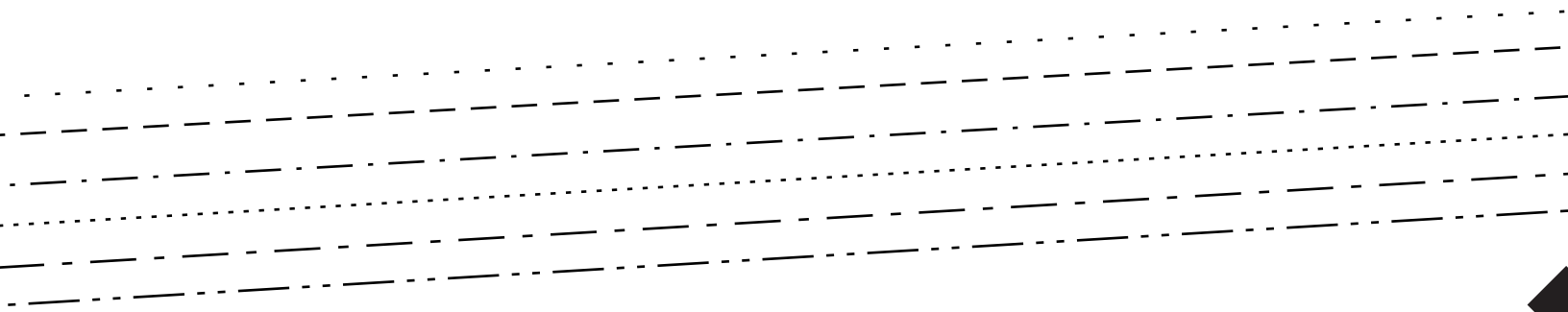
2D

DO

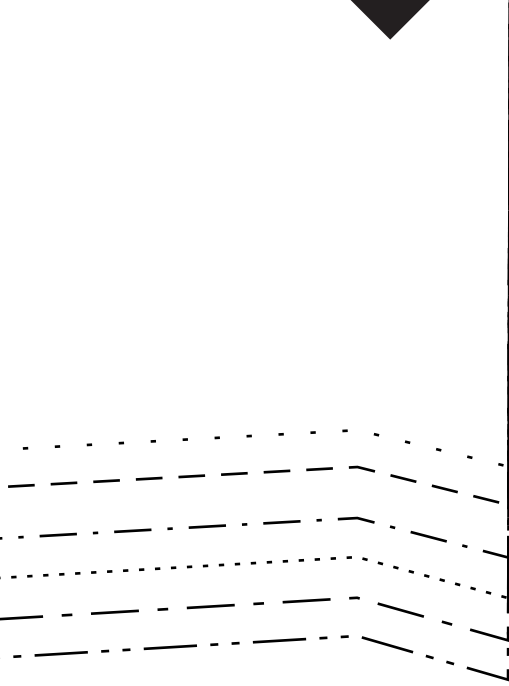
ROK

2





3D



4D