

KROJ BARREL HLAČE L - XXL

NAVODILA ZA TISKANJE IN REZANJE KROJA:

Pri tiskanju kroja nastavite merilo na 100 %. Najprej natisnite prvo stran in preverite velikost testnega kvadrata, ki mora meriti 5 × 5 cm.

Ko je vse pravilno natisnjeno, razporedite liste po označenem zaporedju – od 1A do 6A, od 1B do 6B in tako naprej.

Liste nato zlepimo skupaj in režemo po črtkani liniji.

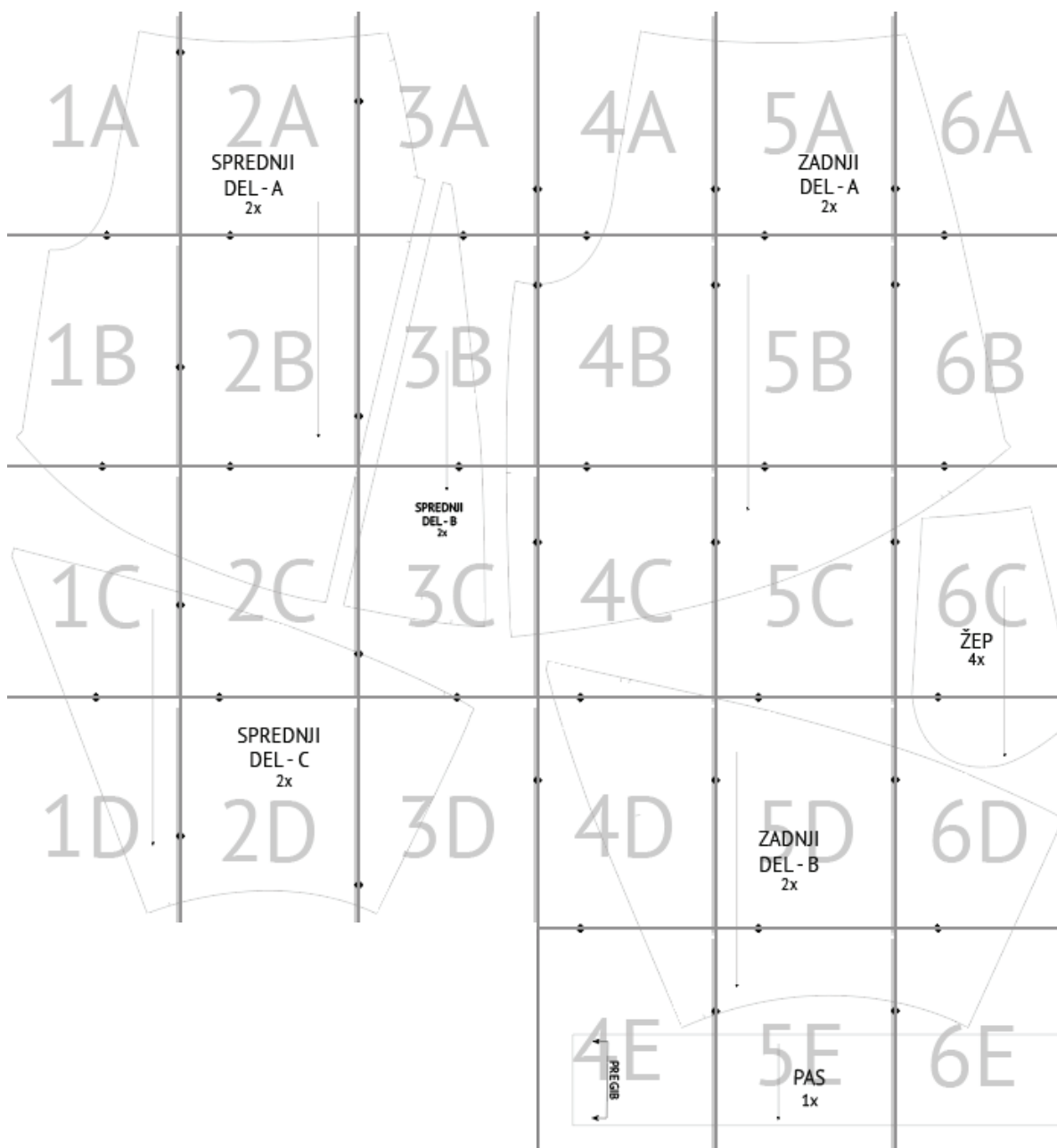
Dodatek za šiv 1cm je že vključen v kroju, zato ga ni treba dodajati posebej.

Pri rezanju blaga bodite pozorni na število potrebnih kosov in označbe delov, ki jih je treba rezati na pregibu blaga.

To zagotovi, da bodo vsi deli pravilno poravnani in končni izdelek lepo izdelan.

TESTNI
KVADRATA
5x5

PRIKAZ SESTAVE KROJA:



1A

2A

SPREDNJI

DEL - A

2x

3A

4A

1B

2B



3B



4B



1C

20

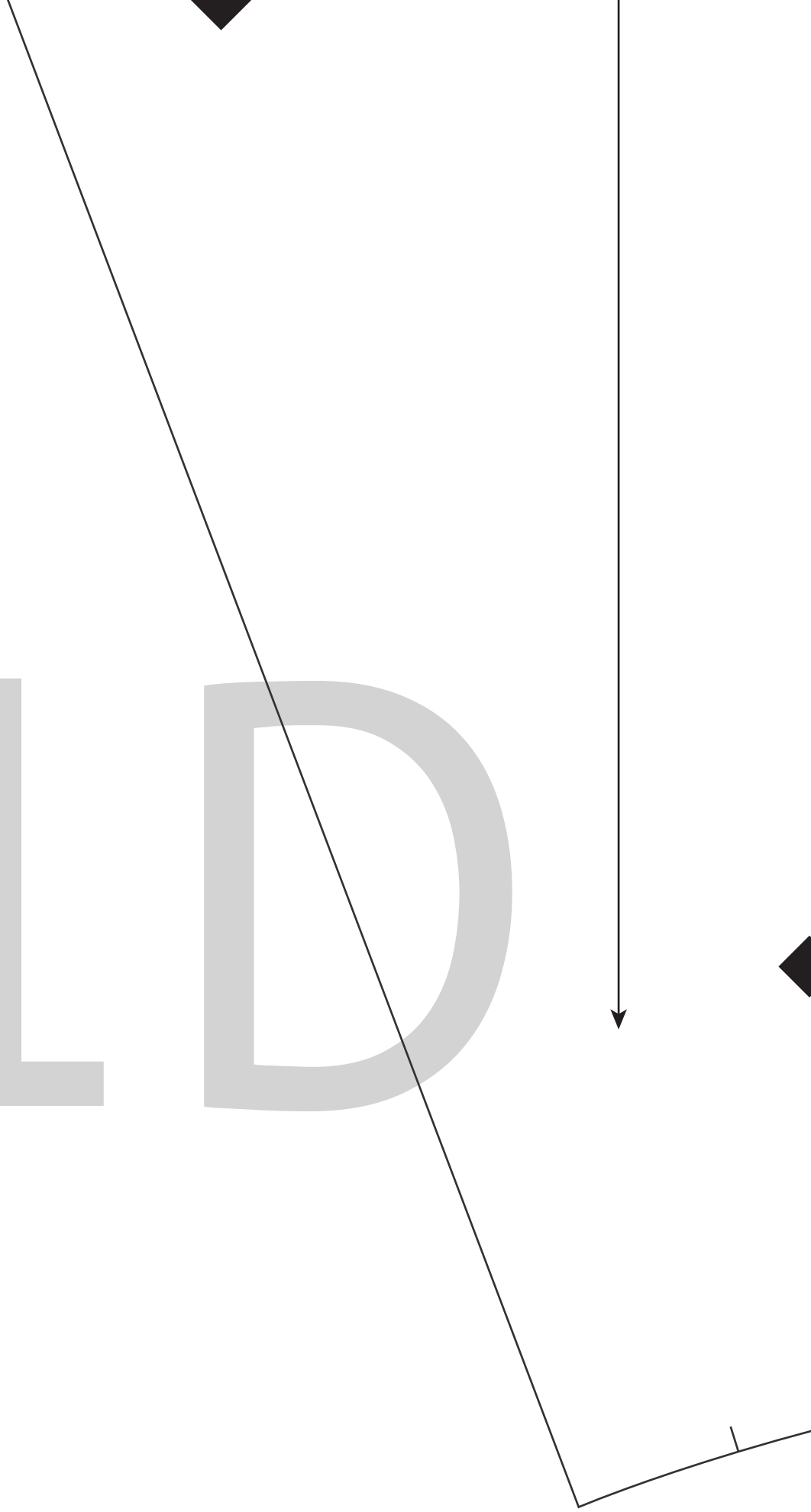


SPREDNJI
DEL - B
2x

30

4C

1D

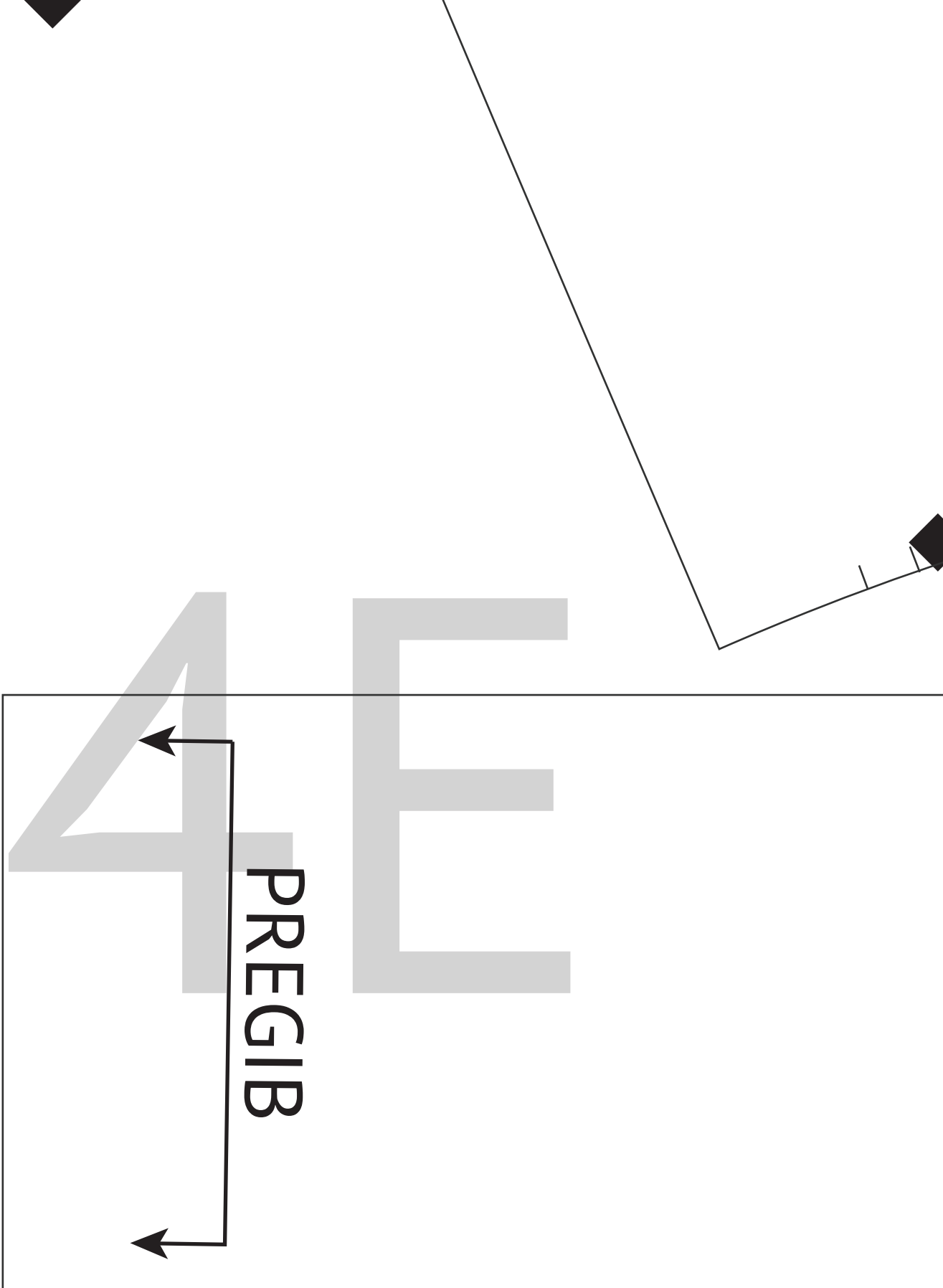


SPREDNJI
DEL - C
2x

2D

3D

4D



5A

ZADNJI

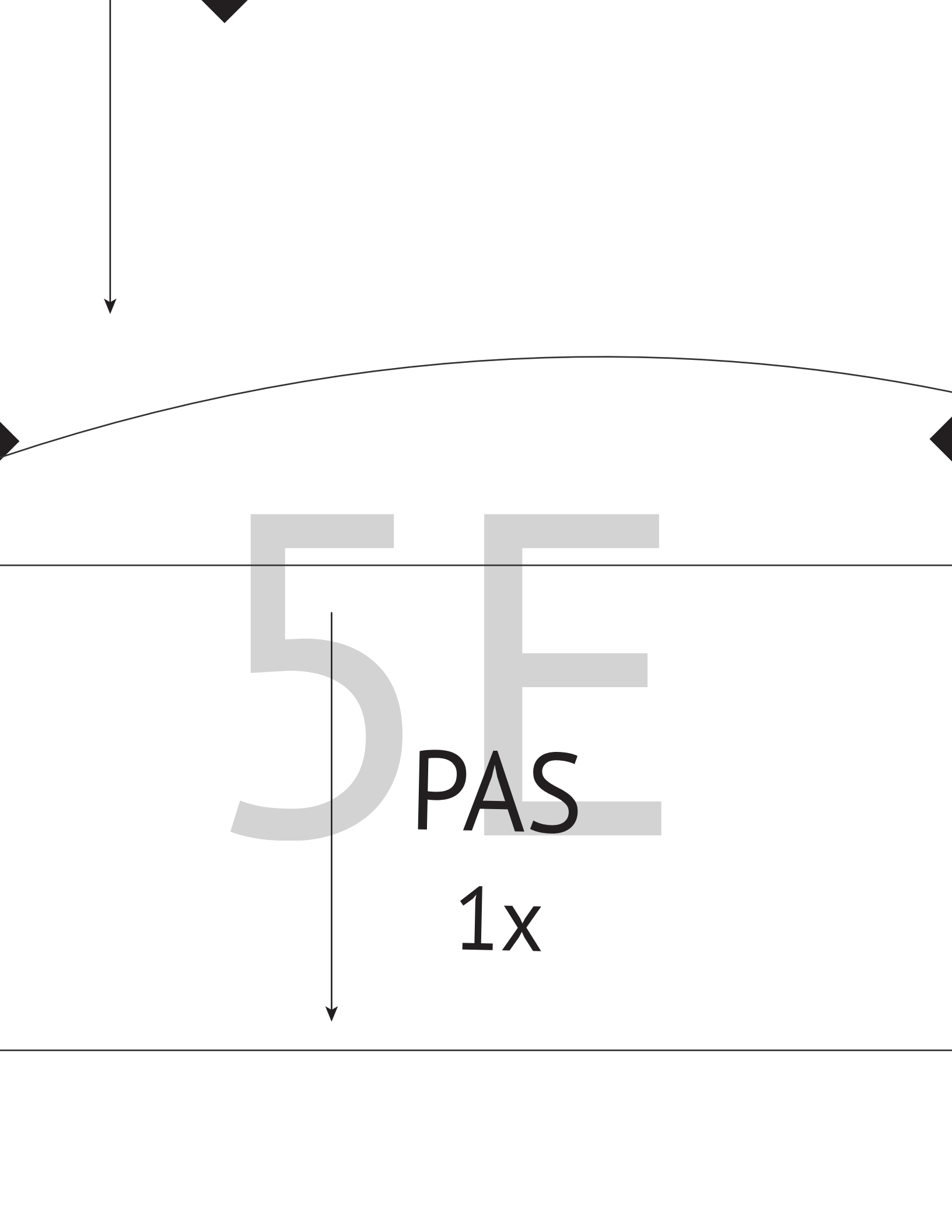
DEL - A

2x

5B

50

5D
ZADNJI
DEL - B
2x



SE
PAS

1x



6A

6B

60

ŽEP

4x

6D

The image features a diagrammatic element at the top consisting of a thin black curved line that starts on the left, curves downwards, and then curves back up towards the right. A vertical arrow points downwards from the top center of this curve. Below this diagram, the text '6D' is displayed in a large, bold, gray sans-serif font. The text is positioned within a white, irregularly shaped area that is bounded by thin black lines. There are also three small black triangles pointing downwards, one at the top left, one at the top right, and one at the bottom center of the page.



6E

The image features a diagram in the upper left quadrant consisting of two black arrows pointing towards a central vertex. One arrow originates from the left edge, and the other from the top edge. A thin black line extends from this vertex towards the top right corner. Below this diagram, a horizontal line spans the width of the page. The text '6E' is centered below this line, with the '6' on the left and the 'E' on the right. The '6' is a simple, rounded numeral, and the 'E' is a blocky, sans-serif capital letter. The entire scene is set against a plain white background.